

ges group

PROVIDING THE BEST SOLUTIONS



Product & Service Portfolio

www.ges-group.com

About Us

Founded in 1946 by Grant & Hector, established in 1977 as Grants Electrical Services. We have grown into GES Group, a leading Electrical and Mechanical Engineering company, serving customers throughout Ireland, the UK, and beyond.

Employing over 80 staff across three sites, we respond quickly to Industry's ever-changing needs, while offering geographic coverage to many of our customers. Traditionally AC/DC motor rewind and re-manufacture specialists, we have developed our portfolio as a market leader to provide an extensive range of technically advanced products and services.

GES Group is an essential element in maintaining and strengthening the backbone of power generation, industry, manufacturing, and the agri-structure of Ireland and the UK.

We are the silent partner to Industry and the economy, working with a wide range of businesses, to ensure all electrical and mechanical equipment required to keep infrastructure operational is available 365 days a year.

We pride ourselves on building strong partnerships with our customers, providing power and energy solutions for small local businesses, as well as large multi-nationals, across a diverse range of industries, such as:

Manufacturing • AD Plants • Wind Farms • Food & Drink • Pharmaceutical • Engineering Specialists • Ship & Aerospace Manufacturing • Water Treatment Facilities • Power Stations

The most basic plant and machinery, and the most advanced communication networking systems, all rely on electricity. If this is not available, the resulting power failure renders a business entirely un-operational. Today, almost all business functions are dependent on a steadfast and clean electrical supply - one that is well designed, maintained, automated & controlled, energy efficient, and mechanically vibration-free.

At GES Group, we uniquely specialise in each of these aspects, which combine to build strong and reliable electrical and mechanical power systems. Using a holistic and full-circle approach, we provide for all of our customer needs in-house.



Our History

2021

Accreditation ISO45001
Silver Level Innovator Award
Newbridge opened - Nidec Leroy
Somer partnership
Winners Deloitte Best Managed
Gold Award

2019

Winners Deloitte
Best Managed Companies

2018

Winners of Deloitte's Best Managed
Company and All Ireland All Star
Engineering Company

2017

GES Group celebrate 45 years in business
and launch Ireland's first Servo
Motor Repair Centre

2016

Founding member of IET's Enterprise
Partners and winner of the Training
Journal Awards Best Change
Management Bronze Award

2013

Accredited by NQA to ISO 18001,
9001, and 14001

2012

Recognised as an Investors in People
organisation

2010

GES Group formed - group name for all
Company divisions

2007

Grants Electrical Services, Belfast,
relocated to purpose-built premises in
Mallusk, Newtownabbey

1997

GI Doake and H&W's Electrical Repair
Division amalgamated into Grants
Electrical Services, Belfast

89-94

Acquisitions of GI Doake, M&T Switchgear,
Harland and Wolff's Electrical Repair
Division & Mid-Antrim Electrical

1977

Grants Electrical Services (NI) Ltd
established in Cullybackey, Ballymena



DAVID MOORE
CEO



RICHARD PAUL
Technical and
Commercial Director

Rewinds and Remanufacture

GES Mallusk was developed to provide Industry with a substantial repair facility. We have specialist Winders, Fitters, Machinists, and Engineers, who have expert skills and knowledge in a wide arena of electrical and mechanical applications.

We carry out rewinds, repairs, and overhauls on all types of motors and generators, and are able to install, maintain, repair, service, and remanufacture low voltage and high voltage machines, such as: turbines, motors, armatures, gearboxes, generators, alternators and pumps.

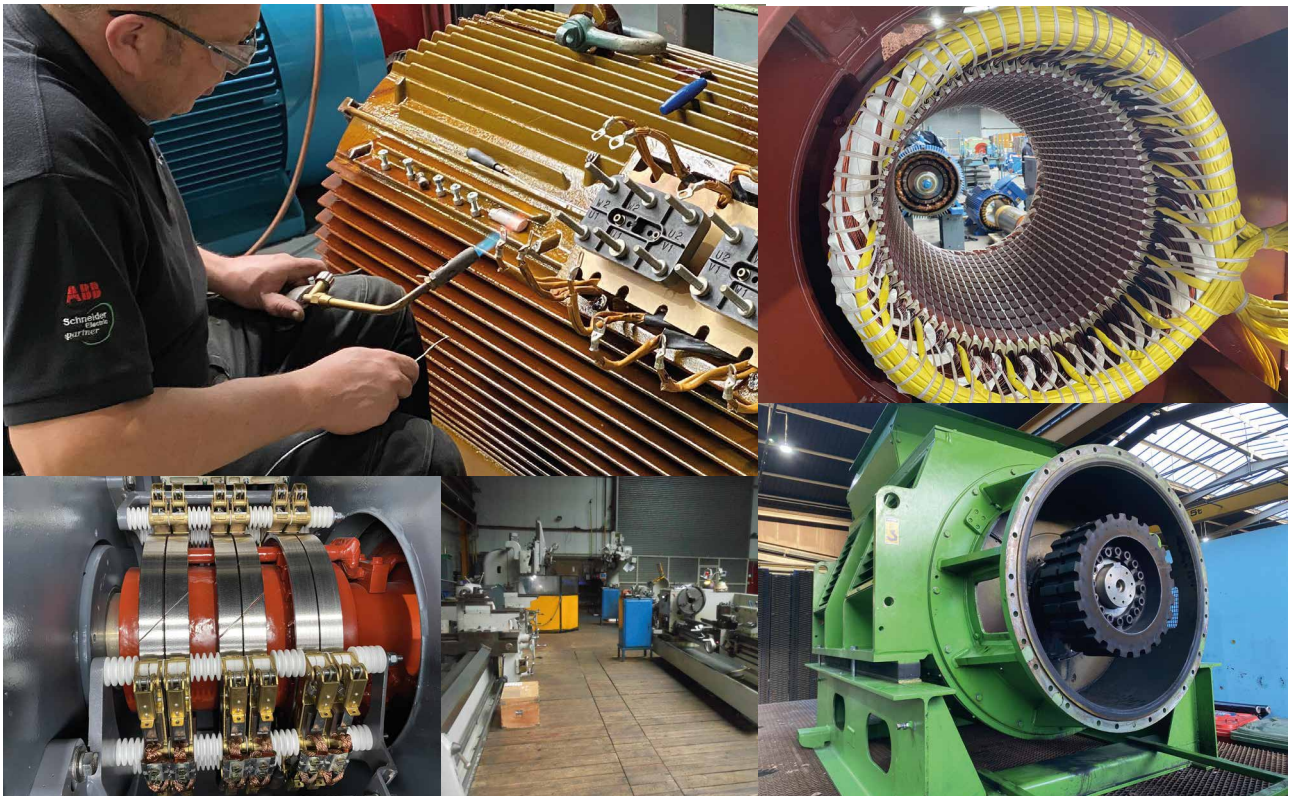
Wind Turbines

We have responded to exponential growth in the wind turbine industry, offering full reconditioning and rewinding services for all generators, along with gearbox refurbishment, and auxiliary component repairs. An individual unit weight of up-to 15 Ton can be accommodated. Our bespoke test facility allows generators to be test-run under both light and grid-loaded conditions, ensuring complete confidence in the quality of repair.

Machine Shop

Our experienced Machinists can produce one-off bespoke components that are tailored to suit your requirements, either new or re-manufactured to mirror the finish and tolerance of original pieces. With short lead times and realistic pricing, we offer an advantageous solution that increases valuable up-time, and reduces waste by re-engineering the original piece, where possible. Welding and metal-spray operations provide shaft recovery options for most materials, and sleeve repairs can provide replaceable wear sections. Capabilities include:

- Turning, Milling, and Drilling
- Vertical Boring and Slotting
- Welding
- Fabrication, and Metal Spraying
- Horizontal and Vertical Press - Up To 100Ton



Servo Motors

With a growing industrial demand for axis control equipment, we have developed a specialist Servo Motor Repair Centre, where servo and spindle drive motors can be refurbished or rewound. We have invested significantly in equipment, technology, and training, to provide our customers with a high quality and local service. Our facility has the capability to repair Servo Motors from many leading manufacturers, including: Siemens, ABB, Fanuc, Lenze, Mitsubishi, and Yaskawa.

The repair of servo motors requires specialist Engineers, knowledge, equipment, and test facilities, which we have invested in to provide our customers with a local repair solution.

All AC/DC Servo repairs are tested both statically and dynamically to ensure proper operation. Feedback encoder systems are set-up and calibrated to the correct angular position, and brakes are tested to ensure they are achieving the required holding torque.



RAY MCHUGH

Mallusk Technical Manager

E: rmchugh@ges-group.com



JOHN LARGEY

Mallusk Workshop Supervisor

E: jlargey@ges-group.com

ATEX Repairs, Rewinds, and Overhauls

Our specialist and fully trained ATEX Engineers can repair, rewind, and overhaul pumps and motors for hazardous areas and explosive atmospheres.

Specialist Services

Dynamic Balancing

Three specialist Avery Dynamic Balancing machines allow us to balance at fixed and varying speeds, on rotors ranging from small special purpose up-to 4500KG and 2200mm diameter. IRD Mechanalysis equipment can be used portably to balance on-site, where it is not practical or economical to move the unit to our Workshop.

Vibration Analysis

Our Machine Condition Monitoring Programme includes vibration analysis, usually conducted on a monthly basis. Predictive Maintenance Programmes allow for planned outages, reducing costly and unplanned breakdown situations.

With over 45 years' experience, we offer services, such as:

- HV/LV & AC/DC Repairs, Rewinds and Overhauls
- Component Replacement, Installation and Testing
- Motion Monitoring and Trend Analysis
- On-Site Predictive/Preventive Maintenance Programmes



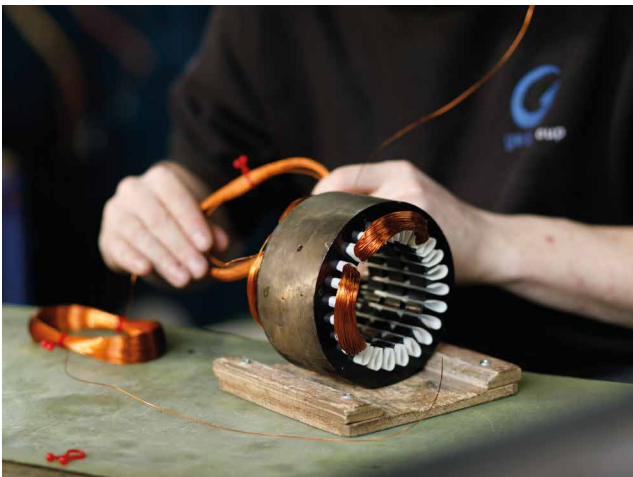
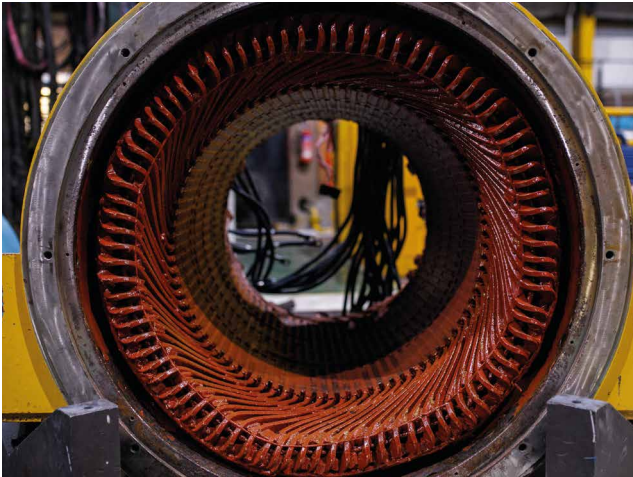
TIM MAGILL

Balancing & Vibes Engineer

E: tmagill@ges-group.com

Fun Fact

An electric motor works by converting electrical energy into mechanical energy. Over time, the wire insulation on the windings of an electric motor can become damaged or the windings can fail due to overheating or other causes, which would then require the motor to be rewound or overhauled.



Technical Sales

As a leading electric motor supplier for Ireland and the UK, we stock and supply a comprehensive range of new and refurbished electric motors at very competitive prices from reputable and high quality manufacturers, including single phase and 3-phase, as well as IE2 and IE3 efficiencies.

We can source any branded motor, pump, or gearbox required by our customers from all leading manufacturers, or offer a suitable alternative.

We also supply WIMES motors, which have been specially developed by The Pump Centre in conjunction with UK Water Utilities, for electric motors designed to Water Industry Mechanical and Electrical Specification. WIMES specifies a minimum efficiency of IE3 for 2, 4 and 6 pole motors up-to 1000kW.



KEY CONTACTS:



LORRAINE FARRELL

Growth Development Manager

E: lfarrell@ges-group.com



CURTIS WALLACE

Growth Development Engineer

E: cwallace@ges-group.com



KEN MCKINNEY

Commercial Sales Development

E: kmckinney@ges-group.com



GARY KIRKPATRICK

Sales Support (IRL)

E: gkirkpatrick@ges-group.com

Stored Motor Health Check

When was the last time you checked motors in storage to ensure they are running smoothly and are fully operational?

If you had to put a motor from storage into service right now, are you sure it would work?

When motors that have been in storage are installed they may not function correctly due to damp storage conditions, physical damage, or winding degradation. We offer a Motor Health Check service that can be carried out in-situ on your site, or in our Workshop, to provide you with certificates of test, and motor labelling, to show at a glance which motors have been tested and marked as operational, and which have not.

Contact us for more information on our Stored Motor Health Checks - info@ges-group.com.

Sanergrid Filters

Sanergrid's SPI® filters allow you to drain rainwater that is potentially contaminated with hydrocarbons in a safe and efficient way, guaranteeing a safe concentration rate in the output rainwater. The standard SPI® range of filters are capable of pumping from 3 litres per minute, up to 150 litres per minute, with bespoke designs available to suit your application.



Contact us for more information - info@ges-group.com.



Renewable Power and Energy Efficiency

Renewable power and energy efficiency are sources of significant economic potential, which is why we strive to provide our customers with the most efficient products and services, to meet the demand that our overloaded grid network is shouting out for.

We specialise in:

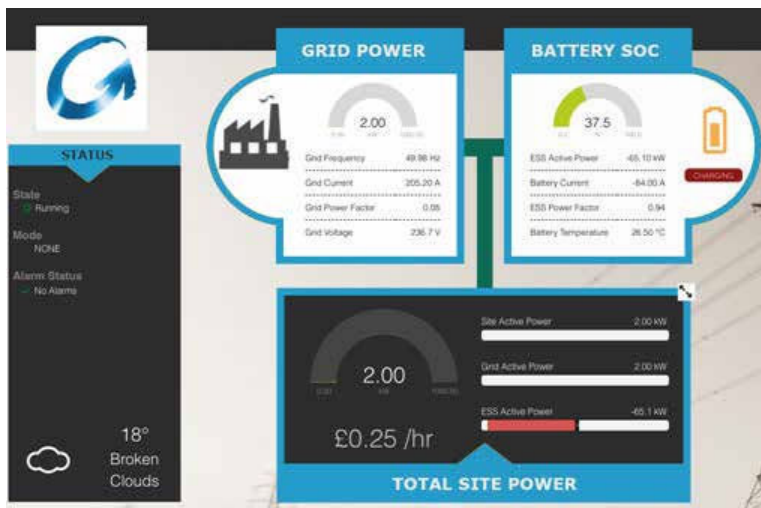
- Wind Energy
- Biomass and Anaerobic Digestion
- Industrial Solar Energy
- Hydro Power
- Ambient Energy

GES Group can support a wide range of renewable technologies, in-house within our own infrastructure, working closely with customers to achieve specific “green” strategic objectives. We have expanded our strengths and abilities, enabling us to install, remanufacture, maintain, inspect and connect renewable projects,

We have managed energy projects effectively for many of our internationally recognised clients through good planning, organisation, commitment, and understanding of customer needs. We achieve successful implementation of the agreed programme, and ensure relevant controls and monitoring are in place.

GES Group Services:

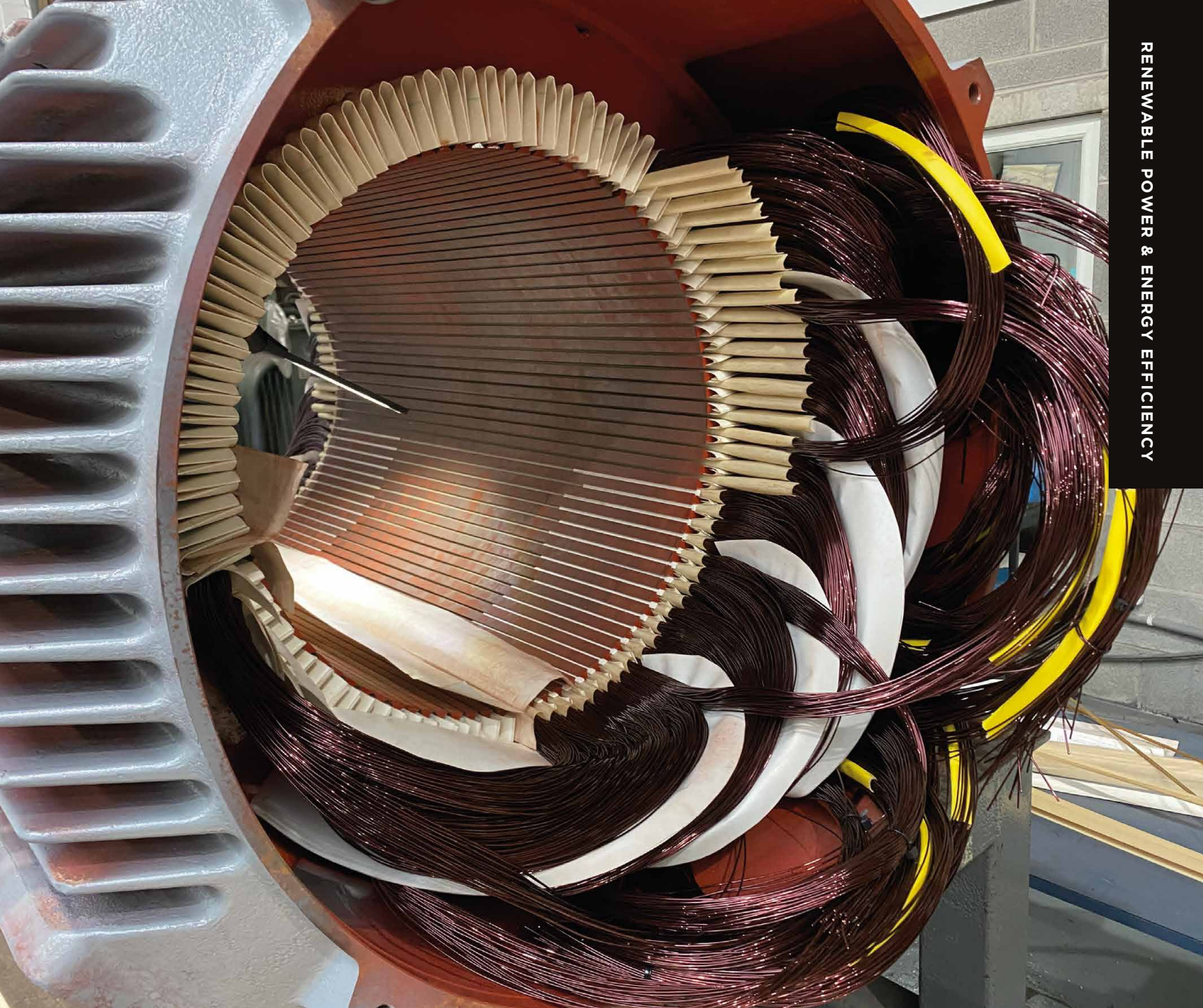
- Grid Connection and Management
- HV/LV Design and Fault Studies
- Switchboard Design, Manufacture and Install
- Transformer Supply and Maintenance Systems
- Inspection, Testing and Certification
- Independent Energy Audits and Surveys
- Energy Portfolio Design and Management Benchmarking
- Integration of Smart Energy Control Systems
- HV Senior Approved Persons (MOD Standard)
- Calibrated Testing Procedures (Aerospace Standard)



Battery Storage Units. Secure, Smart, Sustainable systems.

Benefits to your site!

- Peak Shaving
- Support Rural remote areas
- Maximise Renewables. Repowering Wind & Solar
- Decarbonisation.
- SCADA and Cyber Secure
- Support Weak Grid
- Site Mapping
- Extend Site Load



CASE STUDY

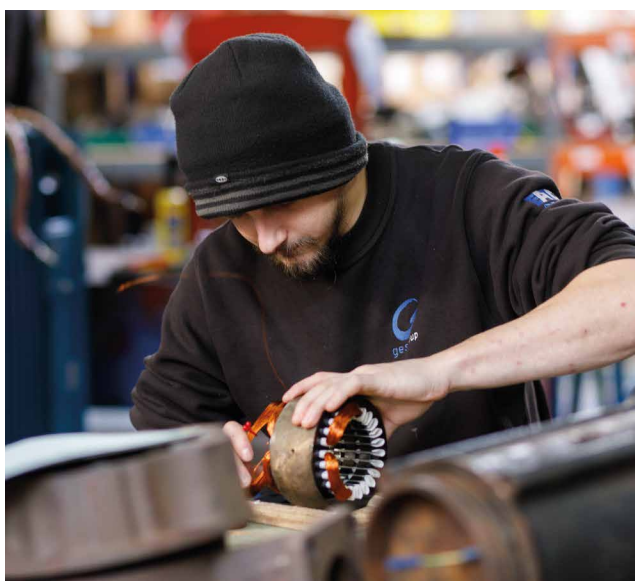
Wind Turbine Generator Redesign

The Northern Ireland wind fleet contains 1,236 sites of 5,000 kW in capacity or less, with a total capacity of 218 MW. A significant number of these are around 250kW (798 with a total installed capacity of 214MW).

Deploying larger capacity turbines with a reduced output capability has become extremely viable as the machines can produce the maximum 250kW at lower wind speeds making for a potentially more efficient machine.

GES have been working closely with the industry in developing the generator winding design to accommodate this. Recently GES have completed machine winding conversions which have been installed at several sites across Northern Ireland and in Europe.

The feedback from customers and service providers has been excellent and the machines performance has met all expectations. With several more conversions



in the pipeline, GES look forward to 2021 with further orders and developing our working relationship with others in this industry.



Power Systems

GES Group's fast-growing and specialist Site Services Divisions offer customers a holistic approach to the design, manufacture, installation, and maintenance of an entire power system.

Planned Preventive Maintenance

We offer Preventive and Predictive Maintenance Programmes utilising a range of leading and advanced Power Analysis Equipment to effectively and efficiently monitor your system. PPM is defined as 'activities performed at pre-determined frequencies, with established methods, to increase system health and uptime'. Example of PPM include: visual inspections, circuit testing and periodic component replacement based on recorded failure analysis. We can work during your planned shutdowns, evenings and at weekends, during holiday periods and at off-peak times.

Reactive Maintenance

Our Reactive Team operate from fully-equipped mobile service vehicles, and are supported by our Technical Sales Team and Trade Counter. We have multi-skilled, experienced, and knowledgeable Engineers, who can carry out a wide variety of works on all kinds of machinery, such as:

- Fault Finding & Diagnostics
- Panel Work – Install, Repair & Replacement
- Panel Upgrades & Modifications
- PLC Programming
- Pump/Motor/Machine Repairs & Maintenance

We are also equipped and trained to provide a rapid response in emergency and breakdown situations to minimise customer disruption and downtime. This is supported with a "one number" emergency call-out service for customers, which is operational 24/7/365.

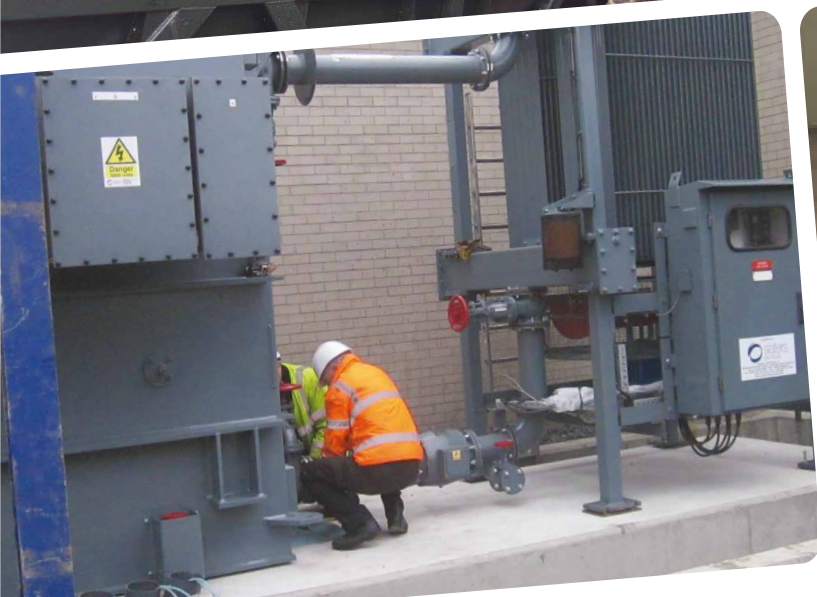
HV Services

GES Group have specialist Engineers trained as Authorised Persons and Senior Authorised Persons to carry out installation and maintenance works on MV and HV systems.

We are experienced working in a wide variety of industries for a diverse range of customers, including: medical, manufacturing, renewable, waste, water treatment services, aeronautical, quarries, and heavy industry, to name just a few.

The HV Services division offer turnkey installation packages that include everything from liaising with the Distribution Network Operator (DNO), to the supply and distribution of the customer's LV requirements.





The division also carry out fault finding and repair of MV/HV systems, as well as the ability to upgrade existing installations.

Projects

GES Group specialise in heavy plant and industrial electrical installations. Quarries, block plants, computerised tarmac plants, AD Biomass facilities, and process plants are just some of the industrial projects we have successfully completed.

We offer a holistic approach to the design, manufacture, installation, and maintenance of an entire power system, including:

- Design, manufacture, and install of switchboard distribution systems
- HV/LV transformer and switchgear supply and inspections
- HV consultation and protection studies
- HV/LV installation, maintenance and testing

KEY CONTACTS:



MARTIN SCULLION

PPM Engineer

E: mscullion@ges-group.com



CHRISTINE LENNON

Tenders Manager

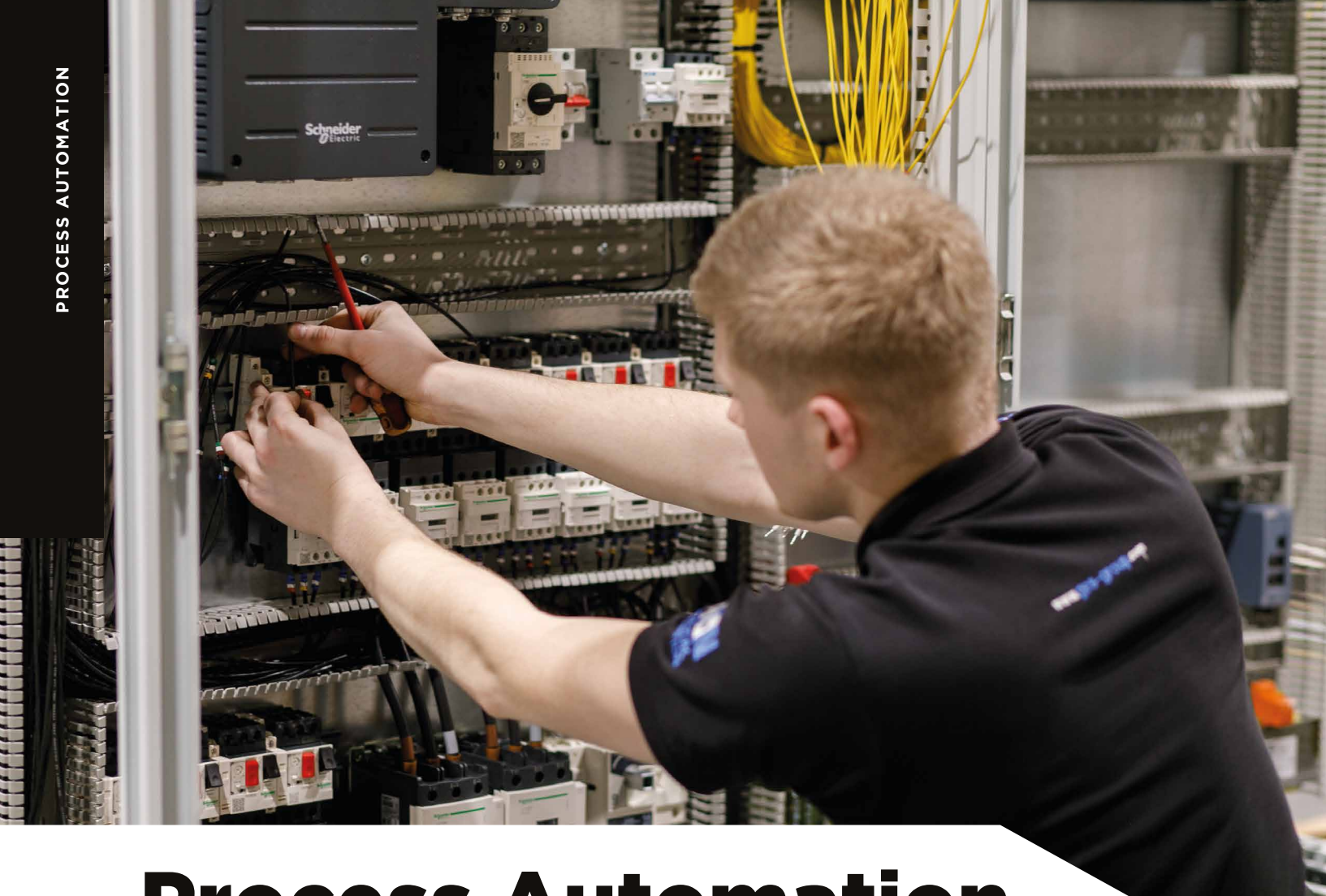
E: clennon@ges-group.com



MICHAEL JOHNSTON

Reactive Maintenance Engineer

E: mjohnston@ges-group.com



Process Automation

At GES Group we have the most diverse and specialist electrical and mechanical engineering capabilities and facilities in the UK and Ireland. We provide our customers with one number to offer a total solution to meet their needs and to help keep industry turning and operational 365 days a year.

GES Group has over 45 years' experience in Industry working for some of the largest organisations in the UK, Ireland and beyond, we have specialist and expert staff at our disposal to give you peace of mind. We provide essential support from the basic plant and machinery to the most advanced communication networking systems. Today, almost all business functions are dependent on a steadfast and harmonized electrical supply, one that is well-designed, maintained, automated & controlled, energy

efficient and mechanically vibration-free. We offer all these services in-house through our experienced and qualified engineers.

GES Group are highly technically trained, certified and accredited by external accreditation and quality training bodies. We are also externally accredited to the current NQA ISO Standards.

Our 5 pillars of expertise:

- Power and Rotation - Rewinds and Remanufacture of electric motors. Inhouse machine shop and balancing equipment. Online (Cloud Based technology) as well as onsite vibration analysis. We are the only Servo motor repair centre in Northern Ireland.
- Power Systems-Planned preventative maintenance, reactive maintenance including breakdown cover. HV/LV specialist services including customer project work.
- Trade Counter and Technical Sales- Working in partnership with Leroy Somer (Nidec), Siemens, ABB, Schneider and Brook Crompton Motors. (other manufacturers not excluded)
- Process automation - Design, build, install and maintain, control panels. Working in partnership with Schneider, ABB Drives and Eaton. (other manufacturers not excluded)
- Renewable Power - we specialise in Wind, Solar, Biomas, Biogas, Hydro and Ambient energy





Our CEO David Moore has stated, “*GES Group, an award-winning industry-leading organisation, provide power and energy solutions for SMEs and large multi-nationals across a range of industries UK, Ireland and beyond. The group has strong and long-standing trading history extending in growth across a significant number of industry sectors, in their drive to develop the renewable energy goal*”

GES Automation (A Division in GES Group) is a leading manufacturer of control and switchgear panels. We specialise in the design, build, install, repair and maintenance of power and control systems.

GES Group are the only panel builder in Ireland trained to install and retrofit PAFSS fire suppression systems in control and distribution panels.

Our strong product portfolio and key supplier partnerships mean that we can provide the ultimate power solution. Our aim is to design, build, and fully integrate cost-effective systems for our customers’ benefit, which are CE certified and designed to IEC 61439.

Our experienced Engineers maintain direct contact with our customers, offering a complete service, including; consultation and planning, design and assembly, installation, maintenance and service. Using the latest technology, we work in close co-operation with the customer, to achieve the best solution for each control problem.

We conduct a detailed analysis of the Project, including; forward planning, equipment modification, project engineering, economic appraisals, and the incorporation of PLCs and specific software programming. We do not depend on armchair strategists – our qualified Engineers, who are familiar with the common problems you face, will provide on-site consultation.

Case Study

Design, Build & Install Critical Distribution Panel

We were appointed by one of the UK and Ireland’s largest Data Centres to build, design, install and commission an infrastructure of 6 essential services distribution systems to supply power to their business-critical plant, even during power outages, with a UPS infrastructure.

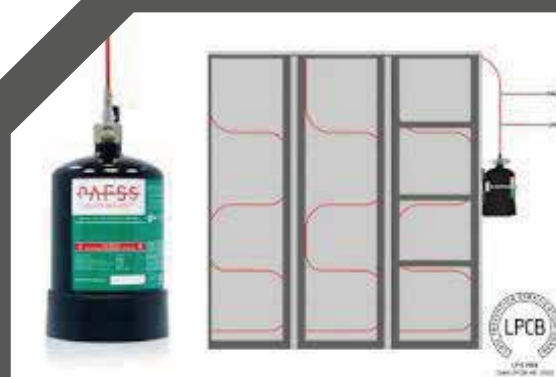
We designed the board to the customer specification, including the design of the network and trip discrimination from the MV incomer right down to LVDC safety circuits.

Our Site Services Team carried out the installation during planned shutdowns over a 6-week period, working to tight schedules as the install and commission was time critical.

KEY CONTACTS:



RODNEY PAUL
GES Operations Manager
E: rdpaul@ges-group.com



Jactone’s Pneumatically Actuated Fire Suppression System (PAFSS) Direct Low Pressure (DLP) fixed fire suppression systems have been specifically designed to protect small enclosures in accordance with Loss Prevention Standard, LPS 1666.

PAFSS DLP systems provide protection inside the enclosure and discharge at the heart of the fire, extinguishing quickly and preventing the fire from spreading to neighbouring enclosures/equipment, and the wider building. This can significantly reduce the risk of injury to personnel and losses caused by equipment down time and operational disruption.

Electrical enclosures can be found, often in multiple numbers, in almost every workplace, factory, warehouse, and commercial site. These small enclosures, including those for distribution, control, communication, networking and servers, can present a problem where faulty equipment, damaged wiring, or improper installation can increase the risk of fire.

Fires in such enclosures can be difficult to spot, often becoming obvious when it is too late to act on. GES Group are the only approved PAFSS installer and retrofitter for electrical enclosures in Ireland.

sales@ges-group.com



Sanergrid

Industrial equipment or storage units containing hydrocarbons must be equipped with a bund or retention tank. Tanks installed outdoors must be drained of water regularly and can release oil in the rainwater. The Petro Pipe PI-616 is a cartridge specially designed to be placed in all kinds of tanks, allowing rainwater to drain while retaining all hydrocarbon traces, preventing ground contamination.

PETRO-PIT® 410 is ideal for exterior retention tanks (flexibles tarpaulin, metal or concrete) and is easy to install to any existing valve or concrete bund.

The filter can be used both horizontally or slightly inclined in the direction of the flow.

DID YOU KNOW: “The only filter on the market recognized for more than 10 years by the biggest UK and European industry (Network rail, Balfour Beatty, ABB, SIEMENS, SCHNEIDER...) and having passed successfully the test by independent laboratories such as Bureau Veritas or TUV with a hydrocarbons rate in output of the filter below 5 ppm”.



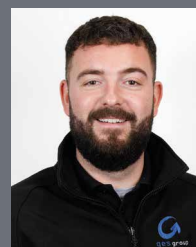
SANERGRID® TRT® product range is compliant with all regulatory and technical requirements regarding hydrocarbons retention for all outdoor conditions. TRT® tanks are primarily used in the field of electrical transformer oils bund, but they can also apply to any equipment.

Further information:

- The beams can be custom made lengthwise or redesigned to your specific needs (Option)
- The standard tank includes two passageways with stainless steel watertight stoppers. (Optional valves)
- The SPI rainwater filtration kit is optional. This kit includes a filter that is calibrated according to the type of transformer oil and the local weather pattern, and the estimated evacuation capacity required. Don't hesitate to contact us for more details.
- The Siphon trap is set in open mode by default. In case of indoor installation, you simply must install an optional stopping on the siphon.
- Containing non-explosive hydrocarbons.



KEY CONTACTS:



CURTIS WALLACE

Growth Development Engineer

E: cwallace@ges-group.com



Power Quality

Power Factor Correction

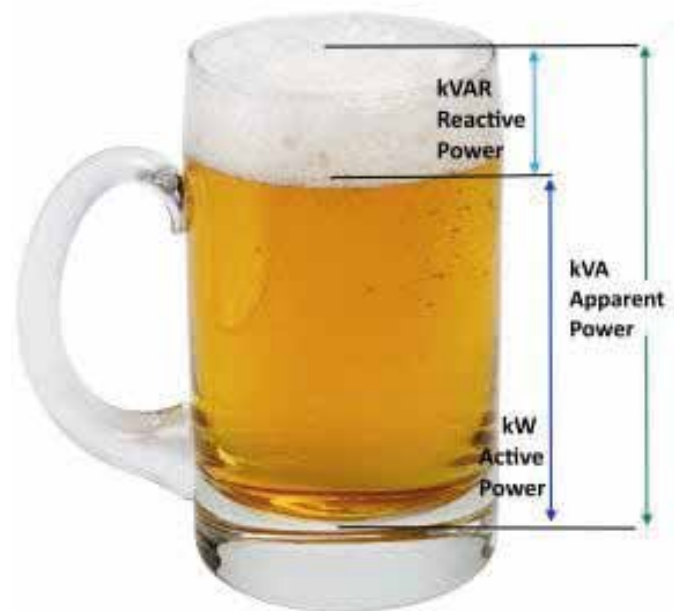
Power factor is a measure of how effectively your electrical equipment converts electrical current into useful output power, such as heat, light, or mechanical motion.

Implications of low power factor include:

- ⦿ Lower than “normal” voltages within a site, with unreliable equipment performance as a consequence
- ⦿ Charges from your electricity provider when power factor falls below 0.95
- ⦿ Stressing of the internal electrical infrastructure, which can cause overheating and equipment degeneration
- ⦿ Increased costs for new installations due to the need to oversize cables, switchboards, and other equipment

Benefits of addressing low power factor include:

- ⦿ Cost Savings - lower your ongoing kVA demand charges and/or reactive charges
- ⦿ Increased Capacity - serve actual power requirements with no bottle-necks
- ⦿ Higher Quality - with better voltage regulation and lower distribution losses
- ⦿ Reduce Downtime - reduce the potential for downtime cause by overloading
- ⦿ Safer Equipment - reduce the potential for overheating and equipment degradation
- ⦿ Improve Equipment Performance - equipment output is consistent due to stablepower input



KEY CONTACTS:



BARRY HEGGAN

Power Quality Engineer

E: bheggan@ges-group.com



Trade Counter

GES Automation, a division of GES Group, services the UK and Ireland with technologically advanced automation and control equipment for Panel Builders and Service Engineers. Our Trade Counter is based at our Ballymena location, but we can arrange in advance for goods to be collected from our Mallusk branch also. GES Automation is accessible to all types of Industry.

We are a main distributor for many globally recognised brands, including: Schneider, Eaton, ABB, OEM, and Mitsubishi.

- Eaton offer a complete range of contactors, circuit breakers, motor-protective circuit breakers, compact control systems, and automation devices.
- Schneider offer the very best in AC variable speed drives, automation, and controls, while ABB provide practical and cost-effective high quality solutions.
- Mitsubishi run an extended 3 year warranty on motor and drive systems in partnership with Brook Crompton

- OEM provide the widest range of industrial automation components, ensuring high quality and performance

Product Ranges

We stock a wide and comprehensive variety of buttons, switches, sensors, encoders, timers, relays, lights, displays, counters, connectors and enclosures.

Machine Safety

Photoelectric safety barriers, safe edges, mats and bumpers, safety relays, non-contact safety switches, electro-mechanical safety limit switches, and trapped key interlocks are held in stock.

KEY CONTACTS:



KIERAN ERVINE

Sales Engineer

T: 02825 656406
E: kervine@ges-group.com

GES Automation (Ireland) marks its first quarter!

Nidec (Leroy-Somer) trading under GES Automation (IRL) have just completed our 1st quarter under the new structure and have had a wonderful introduction to our client base.

We are reaching out to grow the market with a range of new and highly efficient products presently stocked in our Newbridge warehouse, supporting many of the blue-chip Irish manufacturing and industrial motor and drive market, offering a same day delivery on stock items to meet our customer needs.

This has been an exciting start for GES Automation (IRL), and we look forward to building powerful partnerships with our customers and our employees, expanding our portfolio within the island of Ireland.

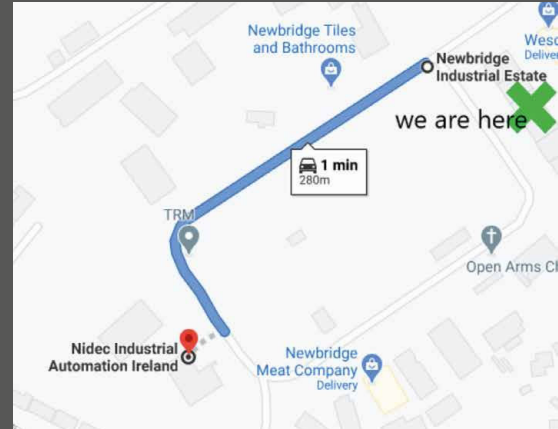
Established in 1977 as Grants Electrical Services (NI) Ltd., the Company has grown and developed into GES Group, a leading Electrical and Mechanical Engineering entity, now serving commerce throughout Ireland, the UK and Europe. An award-winning industry-leading organisation, the company provide power, energy and drivetrain solutions for SMEs and large multi-nationals across a range of industries UK, Ireland and beyond. The group have strong and long-standing trading history extending in growth across a significant number of industry sectors, in their drive to develop the Nidec (Leroy-Somer) motor market throughout Ireland.

We strongly believe that this change to our business model will enhance our customers experience ensuring fast and easy access to our full range of products plus first-class product, service, and support. Today, almost all business functions are dependent on a steadfast and harmonized electrical supply, one that is well-designed, maintained, automated & controlled, energy efficient and with mechanically reliable operations.

At GES we offer advice and expertise in maintaining all these services in-house through our experienced qualified engineers.

David Moore, the CEO of GES Group, said: *“We are delighted with the opportunity to extend our all-Ireland market and with ambitious plans through collaboration within our industry. That said we want to identify and tackle the underlying issues, such as digital skills and innovation through outreach with our new and existing clients, which is an excellent example of our focus on delivering and implementing actions to address the key challenges facing our future development in the Motor & Drive digital energy revolution”.*

General Information: info@ges-group.com
Telephone Number: +00353 (45) 449769
Website: www.ges-group.com



GES AUTOMATION IRELAND

**Newbridge Industrial Estate,
Newbridge, Co. Kildare, W12 A033**

We are situated in the centre of Newbridge Town and within walking distance of the White Water Shopping Centre. Access is just 4km from the M7 / M9, 30km from the M50 and 35km from Dublin Airport.

Our contact details for Sales and Stores are all below:

KEY CONTACTS:



PAUL MURPHY

Sales Engineer (IRL)

E: pmurphy@ges-group.com



GARY KIRKPATRICK

Sales Support (IRL)

E: gkirkpatrick@ges-group.com



LORRAINE FARRELL

Growth Development Manager

E: lfarrell@ges-group.com



JONATHAN HANNA

Sales (IRL)

E: jhanna@ges-group.com



Proudly Supporting



GES Group have partnered with AWARE to support the charity and have done so throughout all 2021/22 and continuing with their support in 2023. We at GES have carefully chosen AWARE to provide the professional support to help reduce the mental health problems becoming a more serious concern for our employees. It's important than none of us suffer in silence and that there is a path for all of us to seek professional help and advice first-hand. Thanks to the help of AWARE and especially to all our employees for their meaningful and kind contribution.

AWARE is the depression charity for Northern Ireland and the only charity working exclusively for those with depression, anxiety and bipolar disorder. For more information on support offered by AWARE, visit their website www.aware-ni.org or contact GES Group on info@ges-group.com.

GES Group announced as one of Ireland's Best Managed Companies 2021

Company receives award for Gold

GES Group has been named as one of Ireland's Best Managed Companies. The awards programme is led by Deloitte Ireland, in association with Bank of Ireland. The company, which demonstrated superior business performance for the 5th year, was recognised at a virtual awards ceremony on Wednesday, 8 September.

25 companies have qualified for the first time this year. This year's programme saw the highest number of new applicants in its thirteen-year history and culminated in a virtual symposium and awards ceremony. The winning companies represent 26 counties across the island of Ireland and come from a range of sectors. With this year's new winners, there are now 139 companies that are recognised as Ireland's Best Managed Companies.



Congratulations - you're a Silver Level Innovator!

Innovate NI, on behalf of the Department for the Economy, would like to recognise your business as a Silver Level Innovator.

Your business is a Silver Level Innovator for selecting, testing or developing an innovative idea.

SILVER LEVEL INNOVATOR



GES celebrate five years of an inspiring partnership



Enterprise Partner

"In 2016, The IET launched our Enterprise Partner programme, and in the last 5 years you and GES Group have been vital in ensuring that our Enterprise Partners have a platform in which they can collaborate across our Partnership Community."

Our support has meant that the IET Enterprise Partner community now consists of 150 companies.

The IET is continuously working towards their new strategy and being a platform that can give the group and our engineers a place to inspire, gain knowledge and influence the worldwide engineering community.



Awards & Accreditations

Strategic Partners



**GES Group Head Office
(Automation & Services)**

18a Pennybridge Industrial Estate
Ballymena BT42 3HB
Tel: 02825 656406

GES Automation Trade Counter

18a Pennybridge Industrial Estate
Ballymena BT42 3HB
Tel: 02825 656406

**GES Group, Mallusk
(Motors & Mechanical)**

5b Hyde Park Industrial Estate
McKinney Road, Mallusk
Newtownabbey BT36 4PE
Tel: 02890 835567

**GES Automation, Ireland
(Drives & Controls)**

Unit 10 Newbridge Industrial Estate
Athgarvan Road, Newbridge
Co. Kildare W12 KW81
Tel: 00 353 (45) 449769



**W: www.ges-group.com
E: info@ges-group.com**